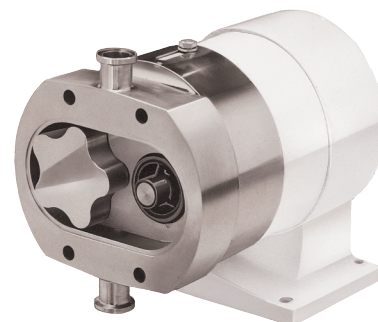


PACKO LOBE PUMPS

55 series

Description

The 55 series are the perfect pump series for delicate, viscous and particle-laden fluids in biotechnology, pharmaceutical manufacture, high technology food processes and all applications where the very highest hygienic standards are required. Special features such as the front mounted shaft seals, the external rotor fixing, the hygienic end cover, and the gasket type joints make this pump perfectly cleanable.



Technical details

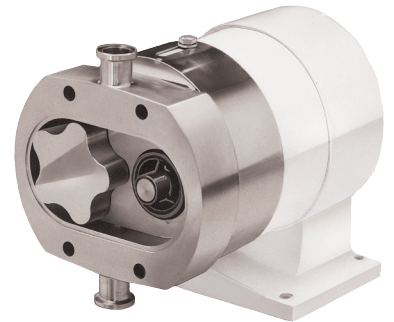
Model	55210	55320	55420
Max. flow (l/min)	16	44	67
Displacement (l/100 rev)	1.09	2.93	6.7
Pressure (bar)	14	20	20
Ports (mm)	12	19	25
Max. speed (rpm)	1500	1500	1000
Bareshaft Weight (kg)	7,9	18,8	26,1
Temp. (°C)	-30 to 140 degrees		
Viscosity (cP)	1 to 1 million		

Technical specifications

Materials wetted parts	Stainless steel 316L
Seal configuration	Single, single flushed, double mechanical seal
Available material oring	FKM , EPDM , FEP encapsulated FKM
Connections	DIN11851, SMS , RJT , IDF , BSP-Male , Tri Clam
Mounting position	Vertical (horizontal optional)
Surface finish (µm)	Pharma quality, internal welds hand polished to 0,5
Certificates & legislation	EN1935-2004, FDA and 3A

PACKO LOBE PUMPS

55 series



Key features

Aseptic operation

All unwanted micro-organisms are kept out of the fluid stream. This prevents spoiling of sensitive products and ensures that only the intended reactions take place in the process. High specification joints are used: Once the system has been cleaned and sterilized it will remain clean and sterilized.

High containment

Escape of pathogenic or other hazardous products is prevented by the specially developed pump head joints. Optional: steam or sterile fluid barriers.

High Hygiene

FDA listed materials maintain hygiene inside and smooth contoured externals make the outside of the pump very easy to clean.

Low product damage

The special rotor shape of this series have been designed to ensure that the integrity of product structure, both microbial and particulate, is maintained.

No hold up of product

The modified rotor bores and vertical ports allow the pump head to completely self-drain, ensuring that expensive product is not retained in the system, that cleaning and sterilization is complete and that there is no cross-contamination between product batches.

Certifications

3A, FDA, 1935-2004 EC



Find your local supplier at www.verderliquids.com

For construction, installation and floor mounting drawings please contact your local authorised distributor.

VERDER
passion for pumps

