

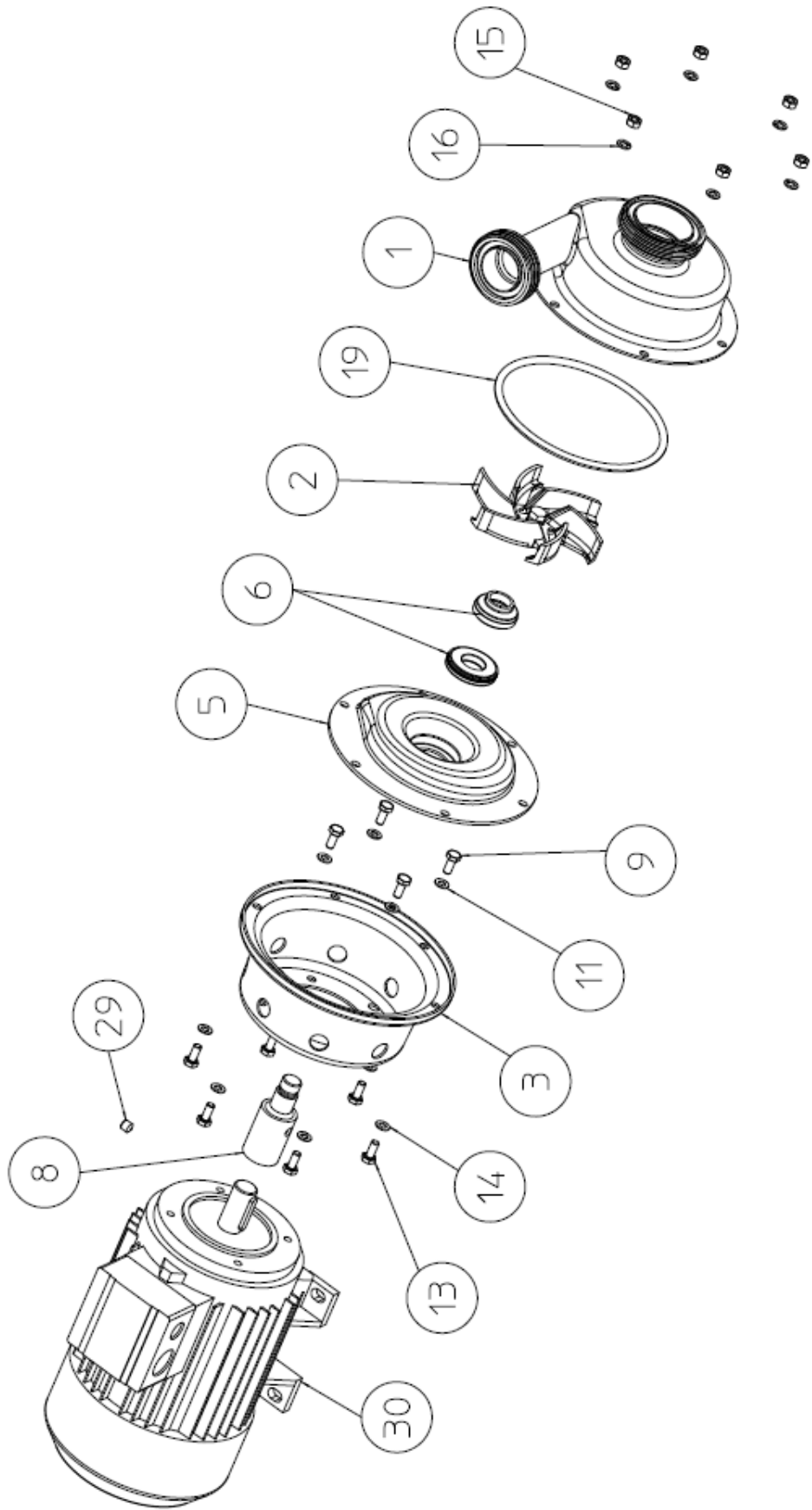
# BOM

Pos	Part name
1	Pomphuis/Corps de pompe/Pump casing/Pumpengehäuse
2	Waaier/Roue/Impeller/Laufrad
3	Tussenstuk (lantaarn)/Manchette de raccordement/Bracket/Laterne
5	Pompachterplaat/Fond de pompe/Back plate/Gehäuseplatte
6	Mechanische dichting/Garniture mécanique/Mechanical seal/Gleitringdichtung
7	Lipseal/Oliekeerring/Joint à lèvres/Simmerring
8	Pompas/Arbre de pompe/Pump shaft/Pumpenwelle
9	Bevestigingsvijs/Vis de fixation/Fixation screw/Sechskant-schraube
11	Rondsel/Rondelle/Washer/Federscheibe
13	Draadstang,vijs/Goujon,vis/Threaded stud,screw/Stiftschraube
14	Rondsel/Rondelle/Washer/Federscheibe
15	Moer/Ecrou /nut/mutter
16	Rondsel/Rondelle/Washer/Federscheibe
19	Pomphuisdichting/Joint de corps de pompe/Gasket for pump casing/Dichtring für Pumpengehäuse
29	Drukvijs/Vis de pression/Setscrew/Gewindestift
30	Motor/Moteur/Motor/Motor
31	Regelbaar voetje/Pied réglable/Level setting screw/Höhenverstellbarer Fuß
32	Moer/Ecrou/Nut/Mutter
33	Motorstoel/Support moteur/Motor base/Montagekonsole
34	Vijs/Vis/Screw/Schraube
35	Moer/Ecrou/Nut/Mutter
36	Rondsel/Rondelle/Washer/Federscheibe
38	Beschermingskap/Capot moteur/Motor shroud/Haube
40	Bevestigingsvijs/Vis de fixation/Fixation screw/Sechskant-schraube
41	Huls/Douille/sleeve/Hülse
42	Pompasdichting/Joint d'arbre de pompe/Gasket for shaft/Dichtring für Pumpenwelle

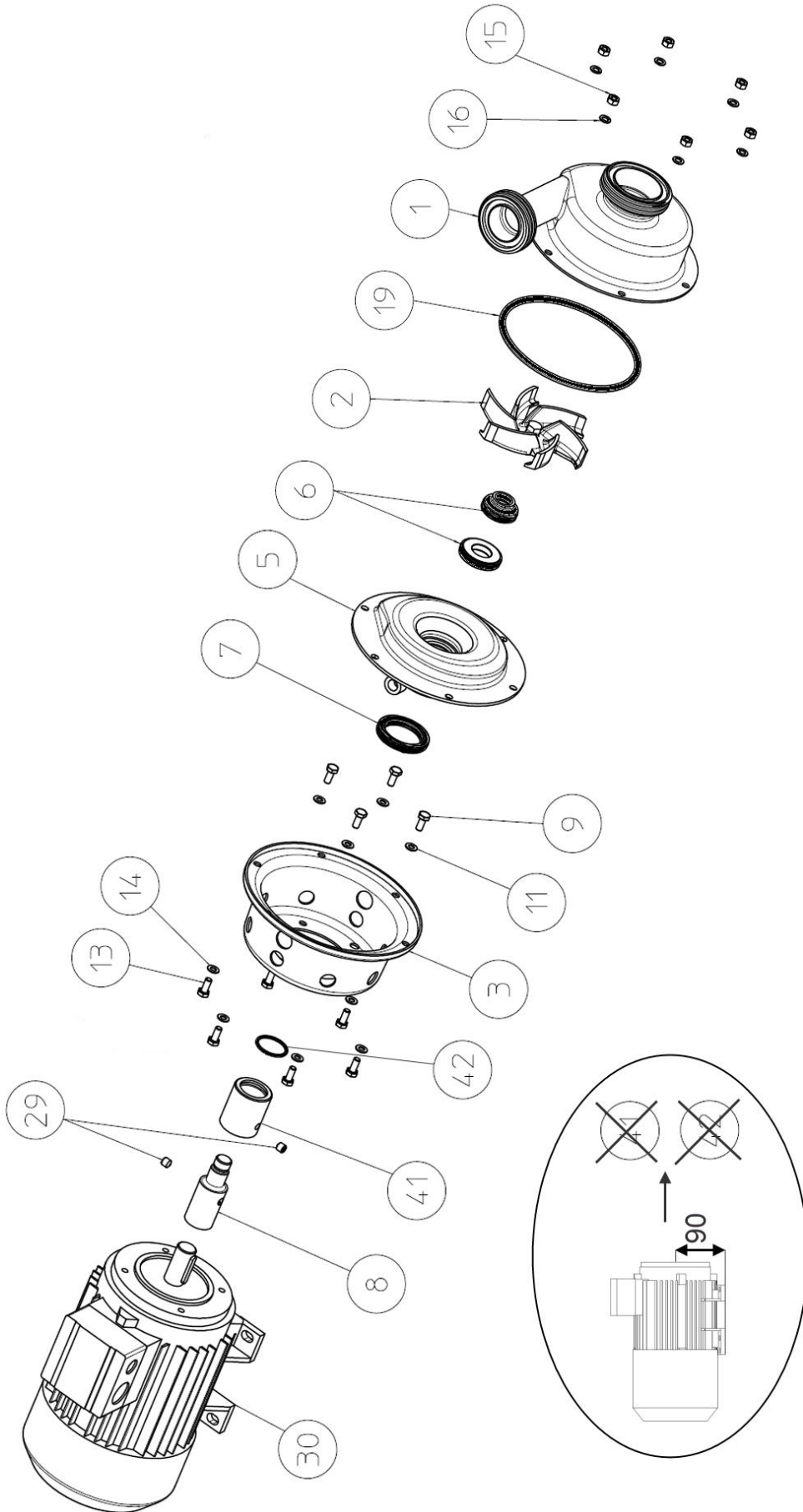
# BOM

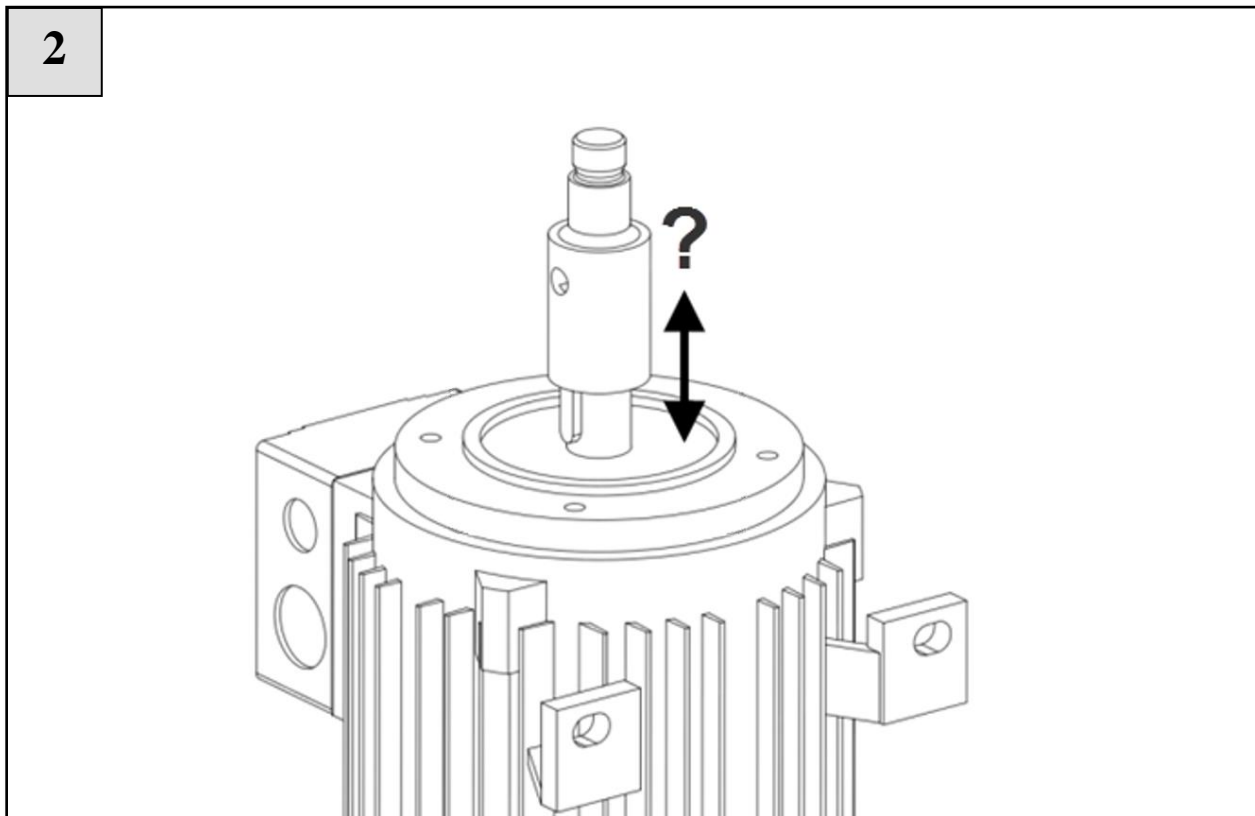
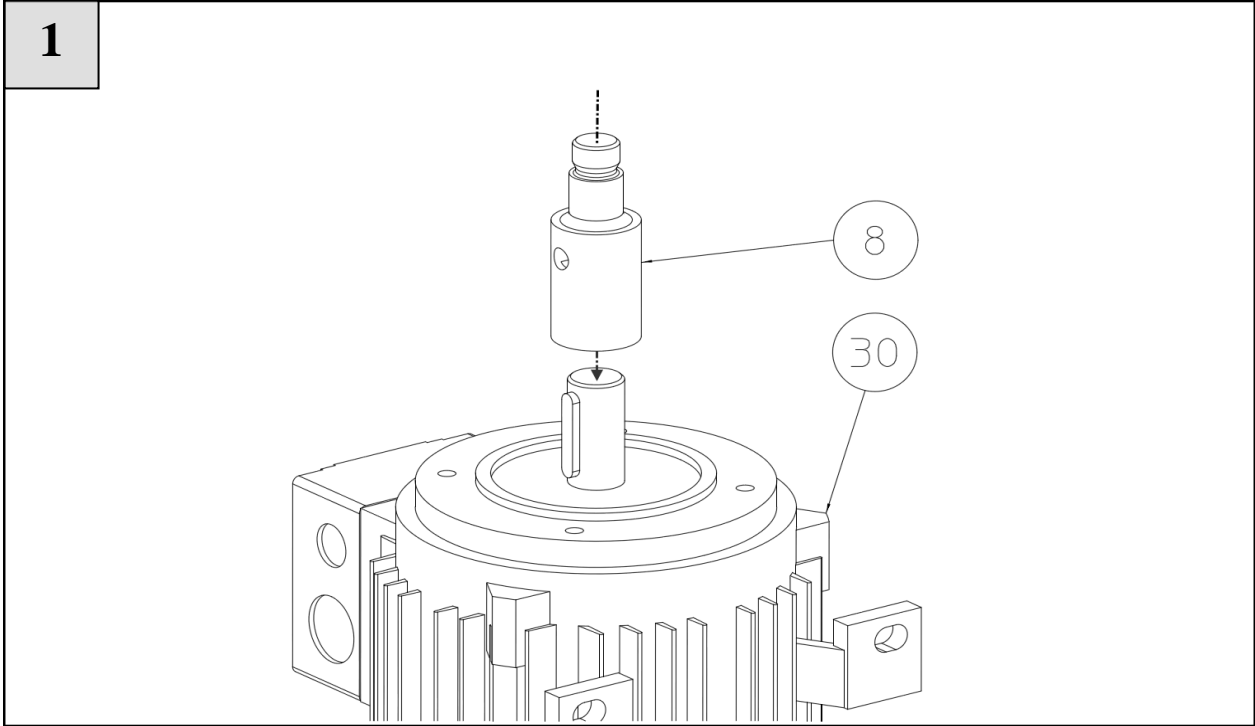
Pos	Part name
1	Těleso čerpadla/Obudowa przednia pompy/Szivattyúház/Voluta
2	Impeller/Wirnik/Járókerék/Rodete
3	Lucerna/Obudowa tylna pompy/Közdaráb/Linterna
5	Zadní deska/Pokryva tylna/Hátlap/Tapa trasera
6	Mechanická ucpávka/Uszczelnienie mechaniczne/Tengelytömítés/Cierre mecánico
7	Těsnící kroužek Lipseal/Uszczelnienie wargowe/Ajakos tömítés/Junta labial
8	Hřídel čerpadla/Wał pompy/Tengely/Eje de la bomba
9	Šestihranný šroub/Śruba mocująca/Rögzítő csavar/Tornillo de Fijación
11	Pérová podložka/Podkładka/Alátét/Arandela
13	Šteft/Śruba gwintowana, wkręt/Menetes csavar/Perno roscado, Tornillo
14	Pérová podložka/Podkładka/Alátét/Arandela
15	Matka/Nakrętka/Anyá/Tuerca
16	Pérová podložka/Podkładka/Alátét/Arandela
19	Těsnění tělesa čerpadla/Uszczelnienie obudowy/Szivattyúház tömítés/Junta de la voluta de la bomba
29	Šroub/Zestav šrub/Állítócsavar/Tornillo de ajuste
30	Motor/Silnik/Motor/Motor
31	Šroub výškově stavitelné nohy/Śruba ustawiania poziomu/Szintező csavar/Patas Regulables
32	Matka/Nakrętka/Anyá/Tuerca
33	Základový rám/Podstawa silnika/Alalplemez/Base del Motor
34	Šroub/Śruba/Csavar/Tornillo
35	Matka/Nakrętka/Anyá/Tuerca
36	Pérová podložka/Podkładka/Alátét/Arandela
38	Kryt motoru/Osłona silnika/Motor borítás/Carenado del Motor
40	Šestihranný šroub/Śruba mocująca/Rögzítő csavar/Tronillo de fijación
41	Pouzdro/Tuleja/Persely/Casquillo
42	Těsnící kroužek hřídele čerpadla Pompasdichting/Uszczelka do wału/Tömítés/Junta del Eje

**I**

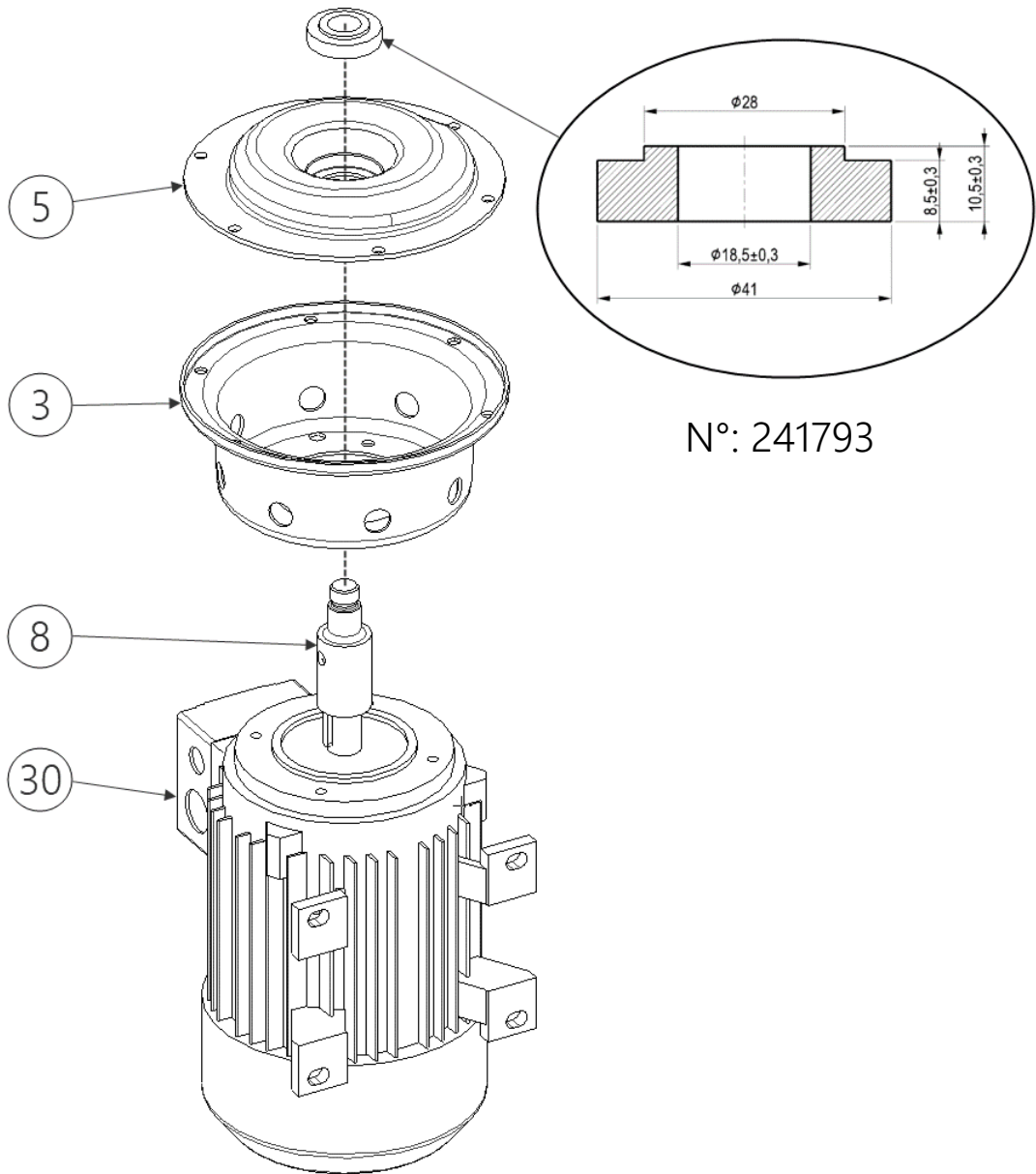


**II**





3



N°: 241793

PACKO INOX LTD  
DIKSMUDE BELGIUM **Packo**


TYPE: \*\*\*\*/\*\*\*\_\*\*\*/\*\*\*\*\*

Mat.code: \*\_\*\*\*\*\***S**\*\*\*\*\*

Year: \*\* \*\* S/N: \*\*\*\*\* \*\* kg

Q: \*\*\* m<sup>3</sup>/h | H: \*\* m

DO NOT RUN PUMP DRY **CE**



PACKO INOX LTD  
DIKSMUDE BELGIUM **Packo**


TYPE: \*\*\*\*/\*\*\*\_\*\*\*/\*\*\*\*\*

Mat.code: \*\_\*\*\*\*\***O**\*\*\*\*\*

Year: \*\* \*\* S/N: \*\*\*\*\* \*\* kg

Q: \*\*\* m<sup>3</sup>/h | H: \*\* m

DO NOT RUN PUMP DRY **CE**



PACKO INOX LTD  
DIKSMUDE BELGIUM **Packo**


TYPE: \*\*\*\*/\*\*\*\_\*\*\*/\*\*\*\*\*

Mat.code: \*\_\*\*\*\*\***Q**\*\*\*\*\*

Year: \*\* \*\* S/N: \*\*\*\*\* \*\* kg

Q: \*\*\* m<sup>3</sup>/h | H: \*\* m

DO NOT RUN PUMP DRY **CE**



PACKO INOX LTD  
DIKSMUDE BELGIUM **Packo**


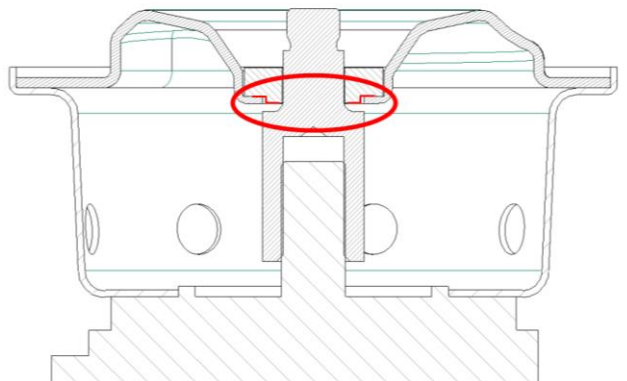
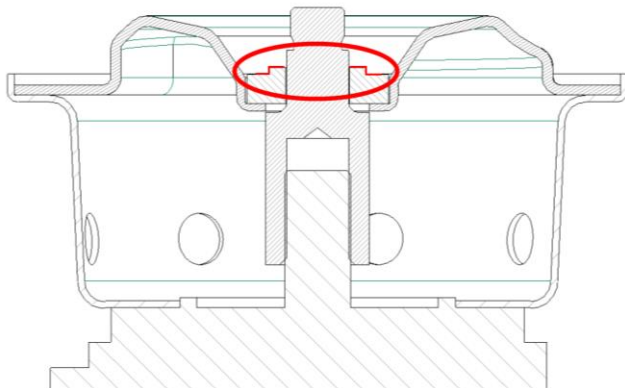
TYPE: \*\*\*\*/\*\*\*\_\*\*\*/\*\*\*\*\*

Mat.code: \*\_\*\*\*\*\***N**\*\*\*\*\*

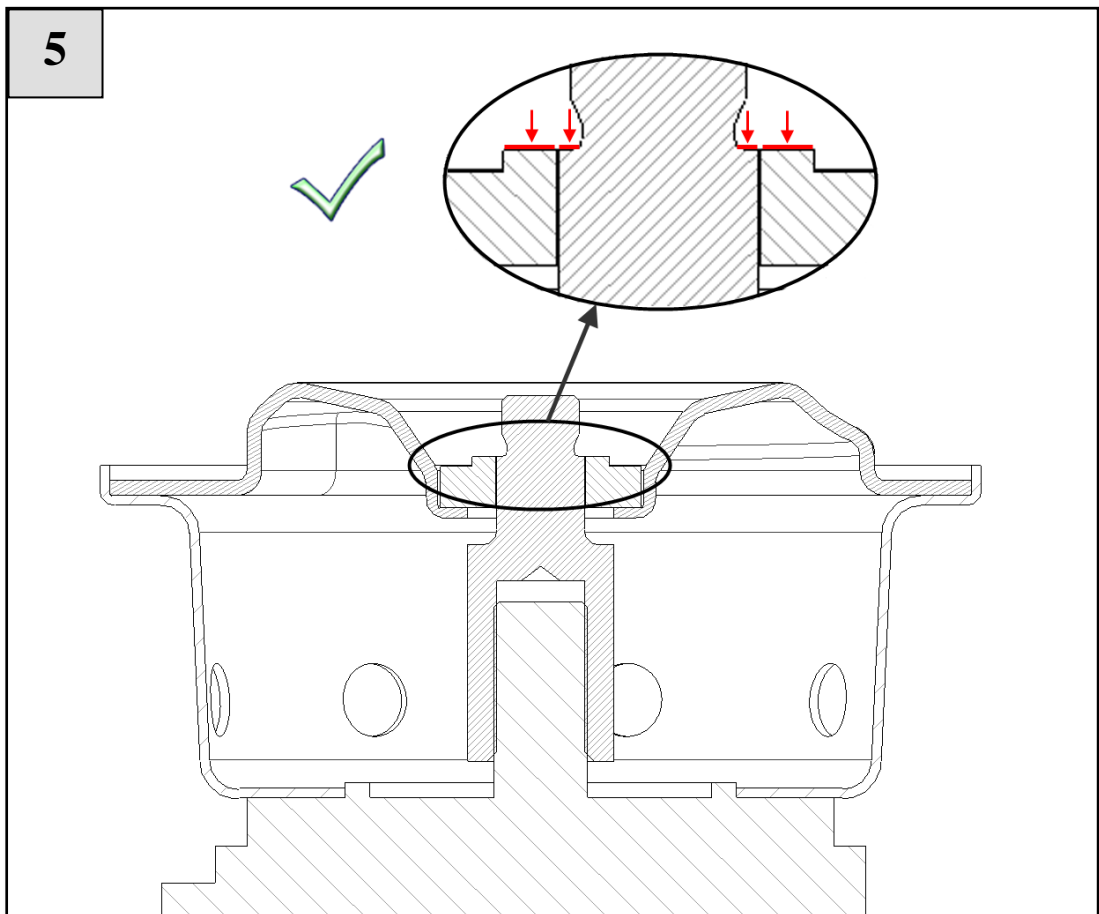
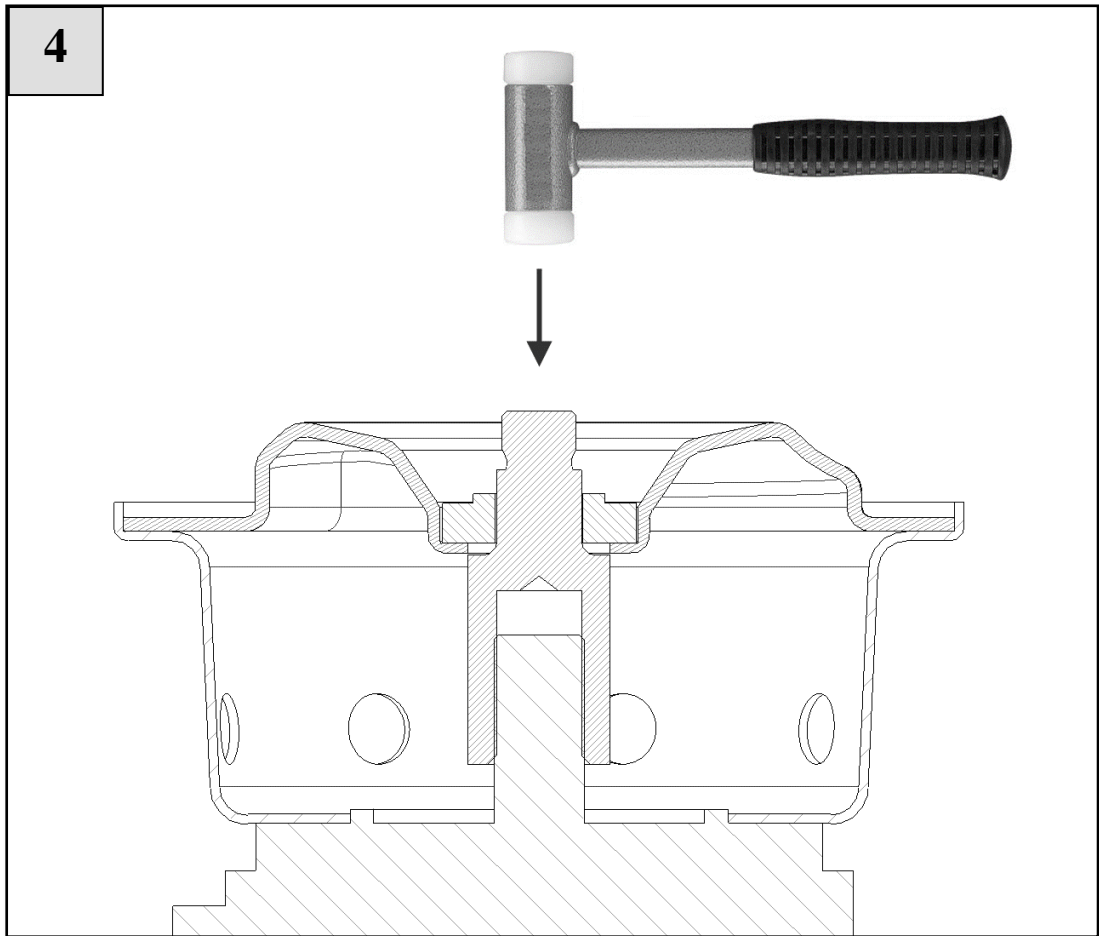
Year: \*\* \*\* S/N: \*\*\*\*\* \*\* kg

Q: \*\*\* m<sup>3</sup>/h | H: \*\* m

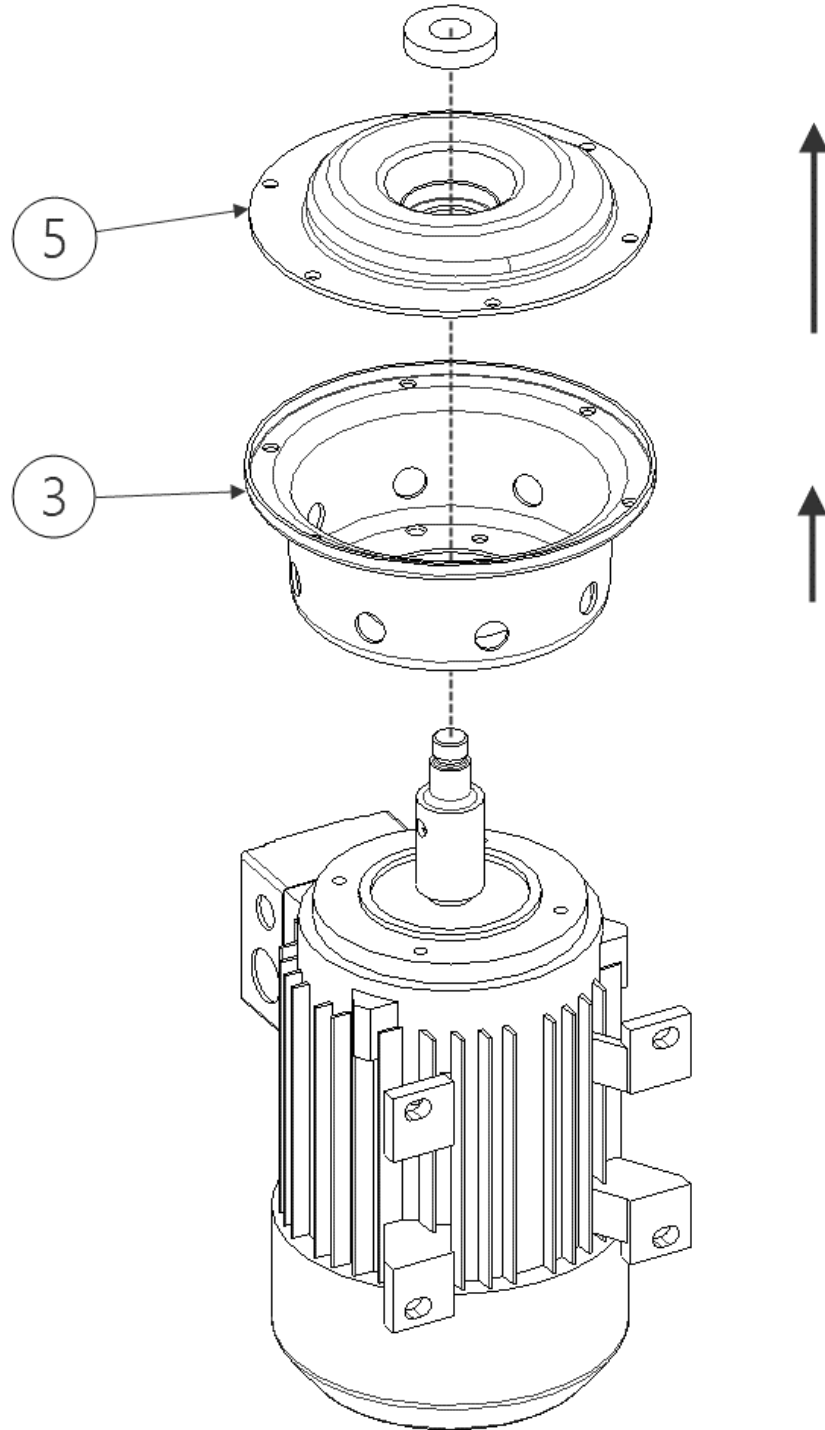
DO NOT RUN PUMP DRY **CE**

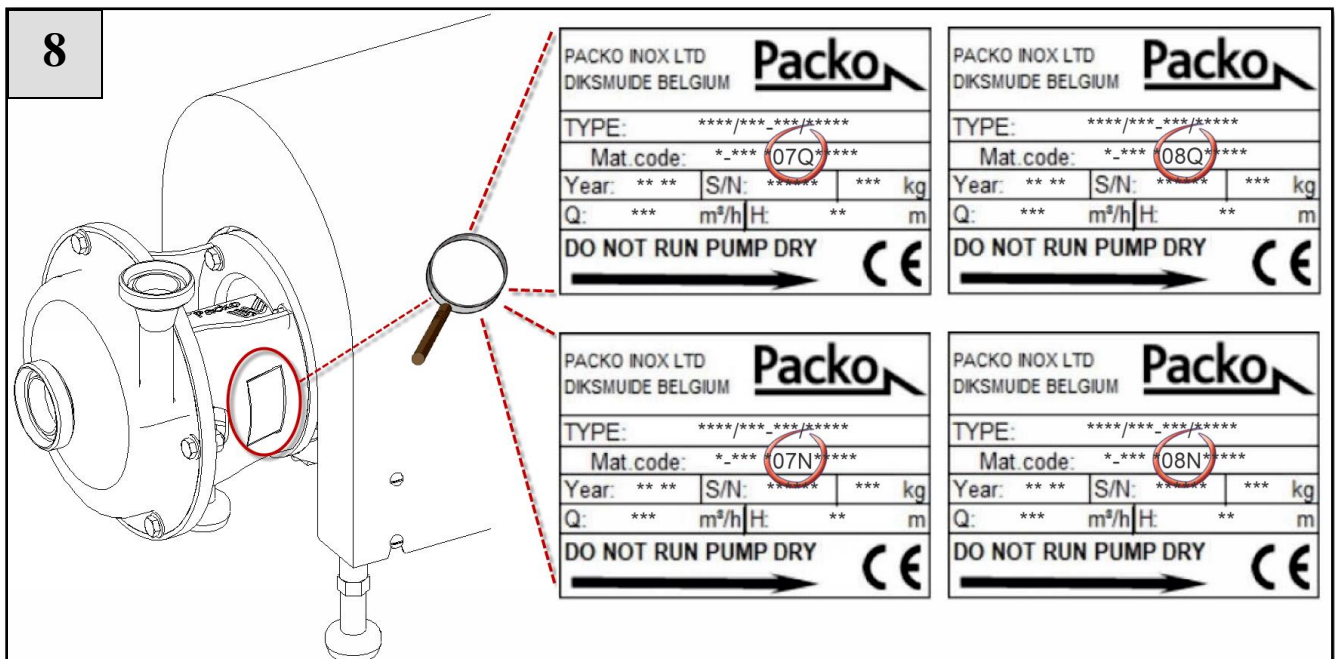
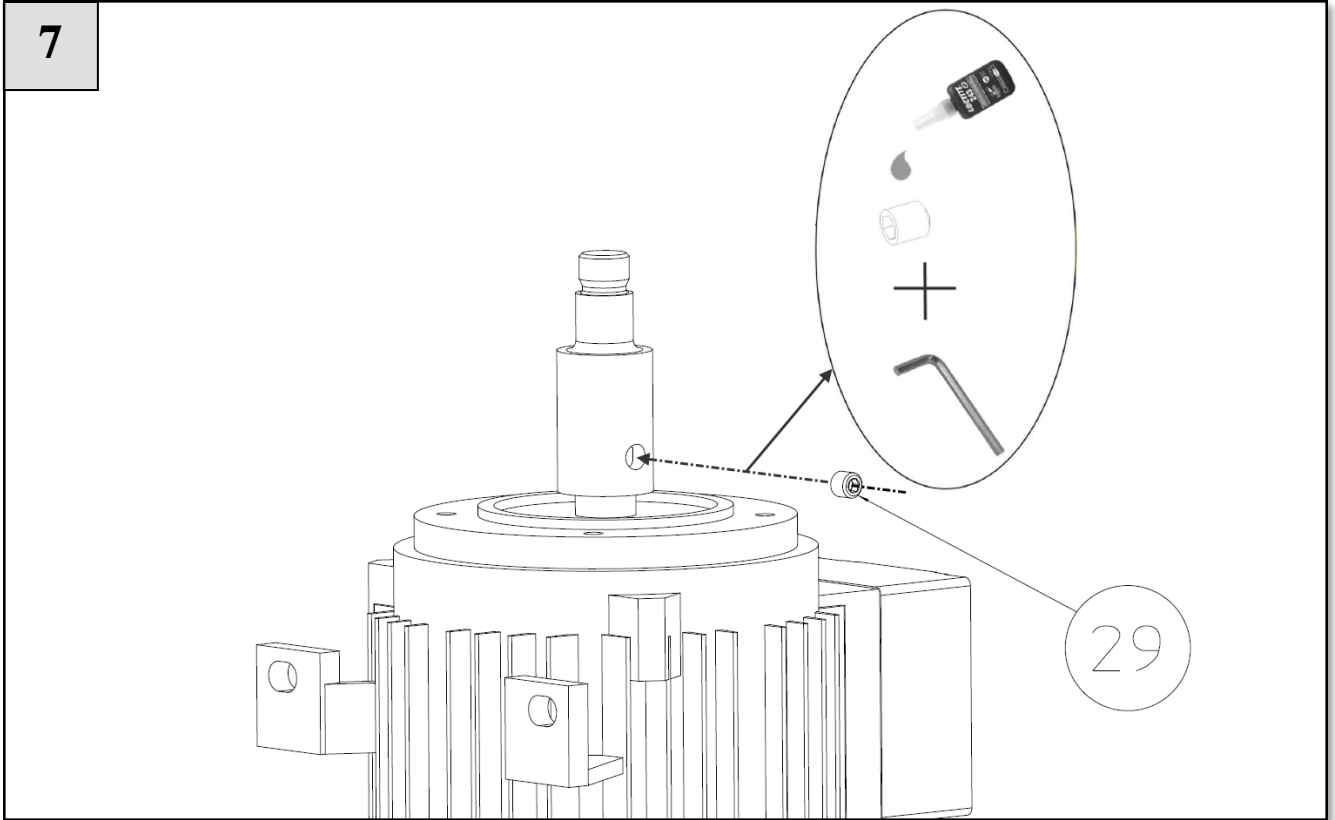



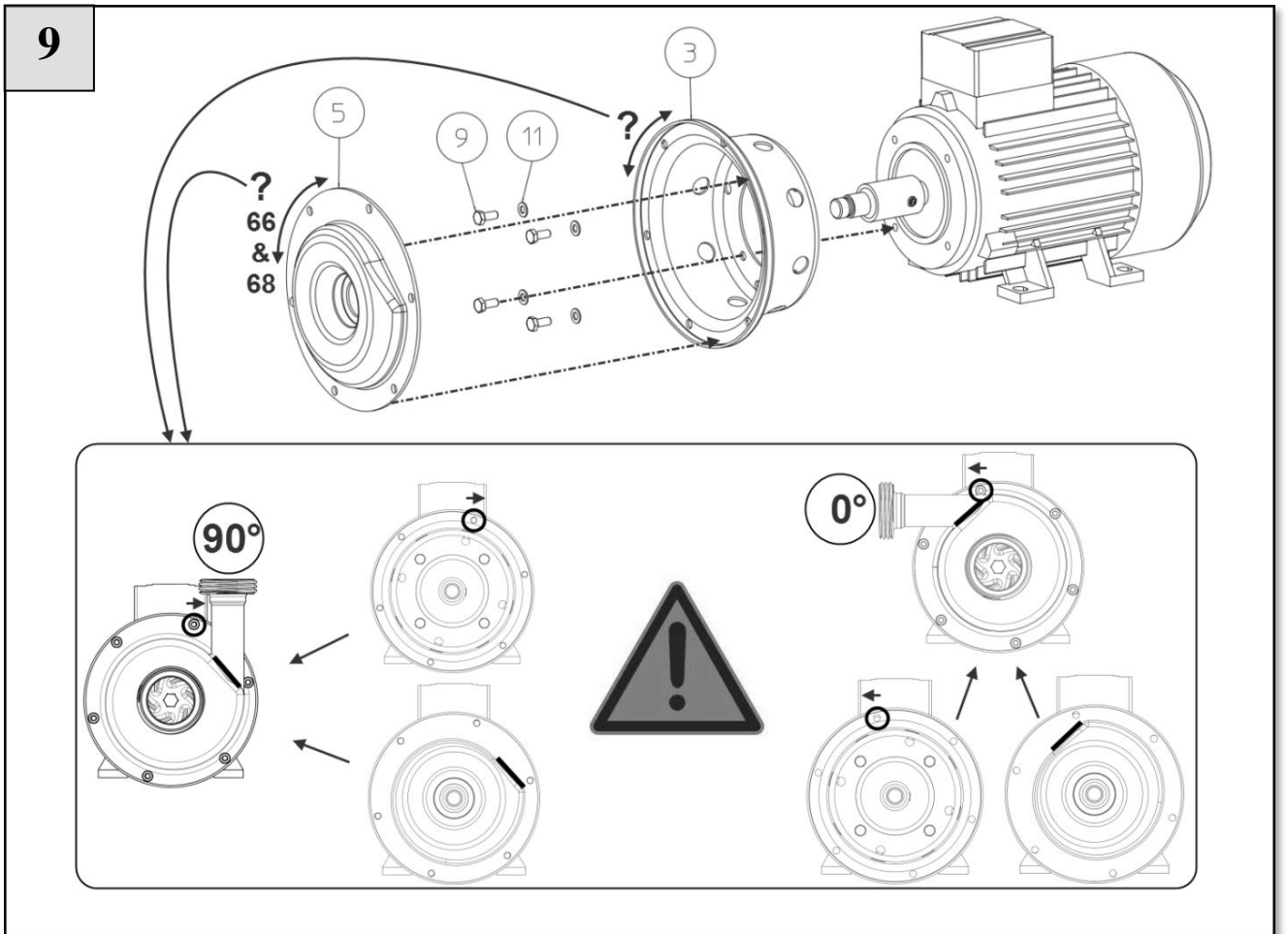
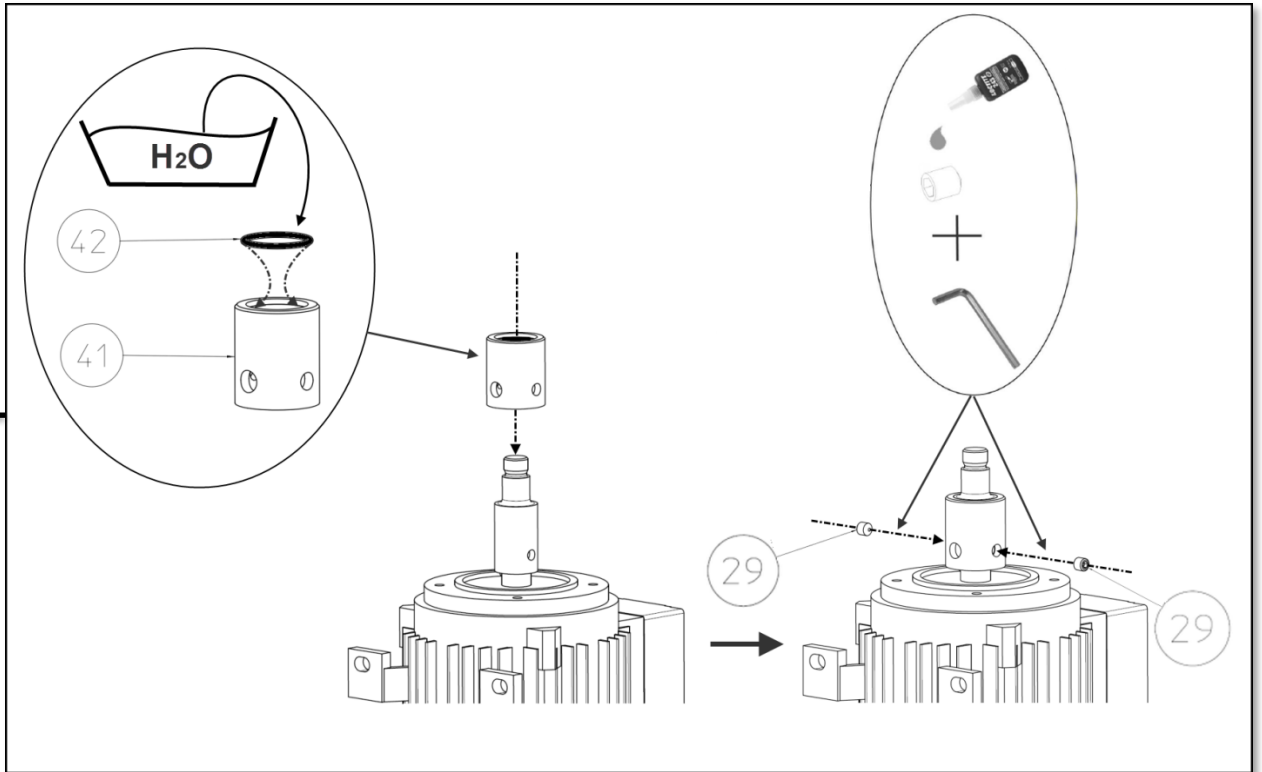




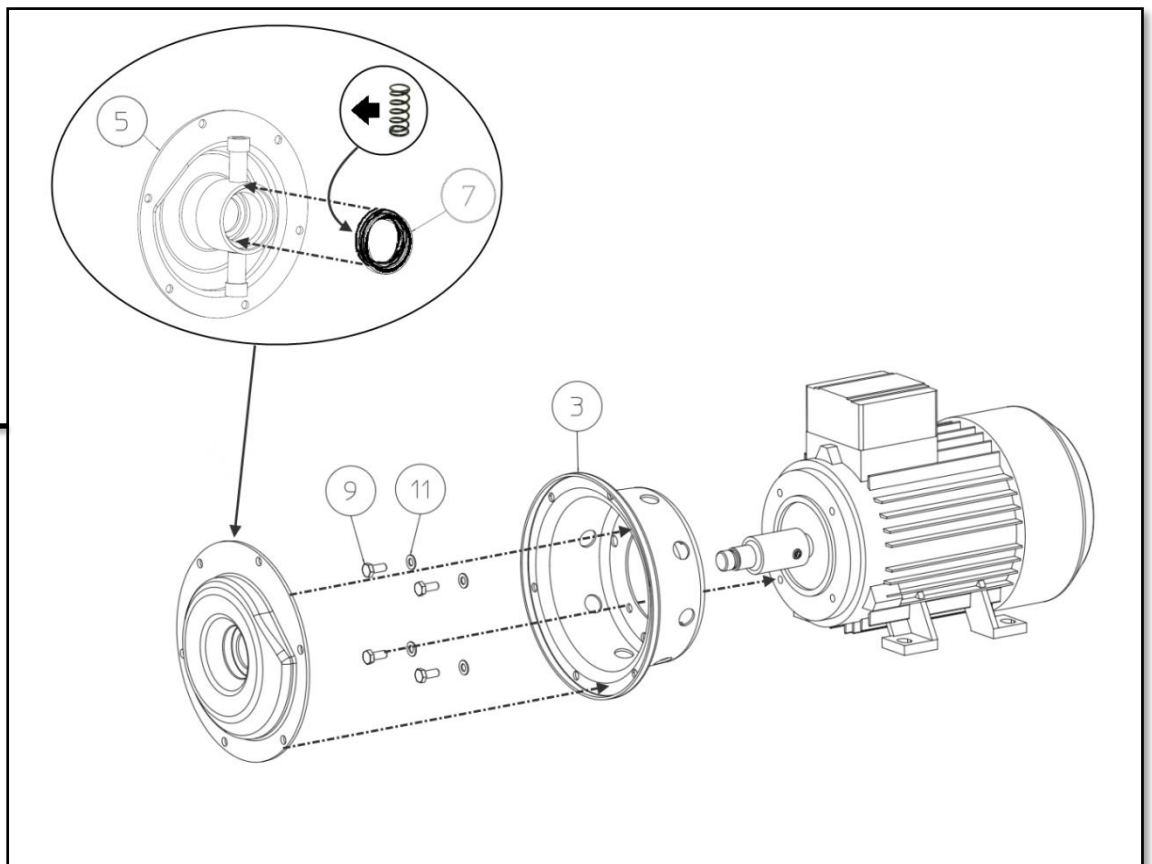
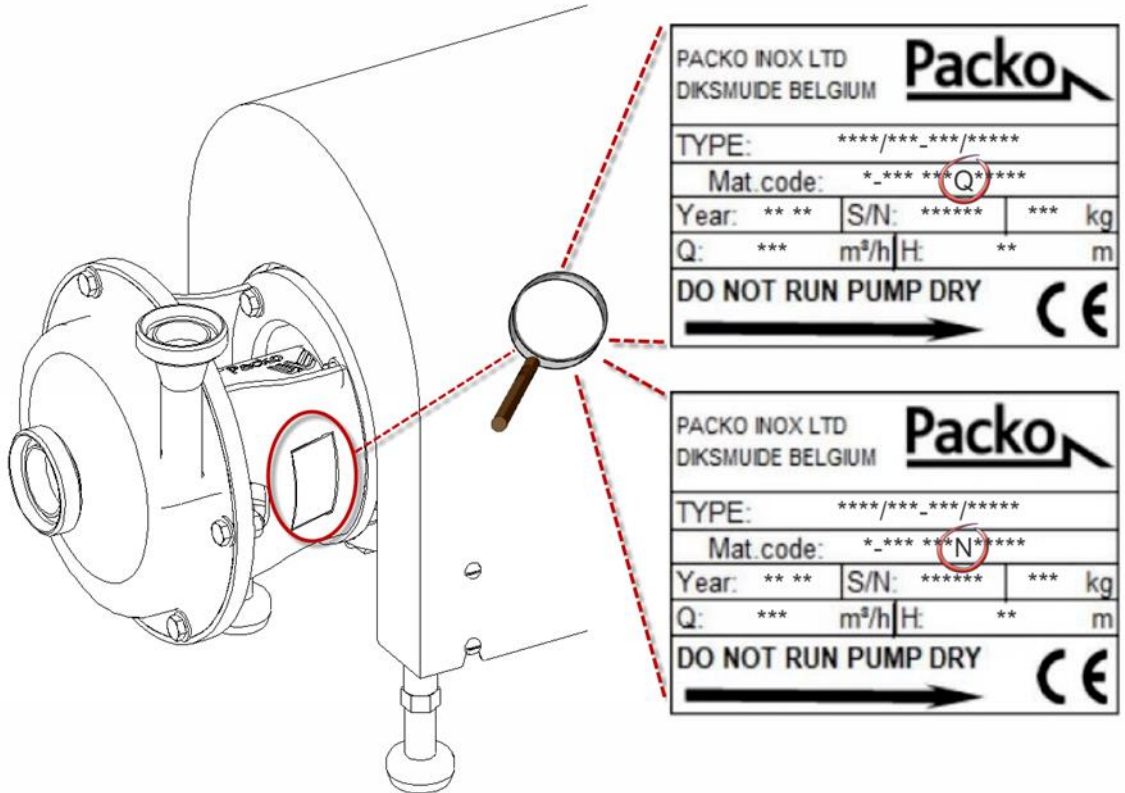
6



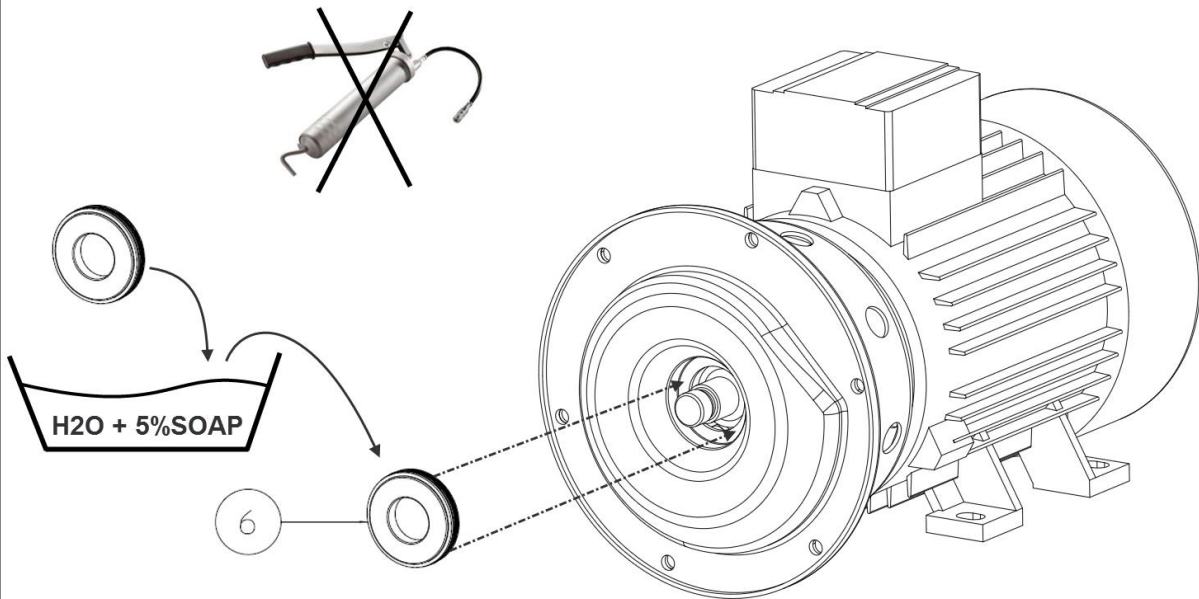




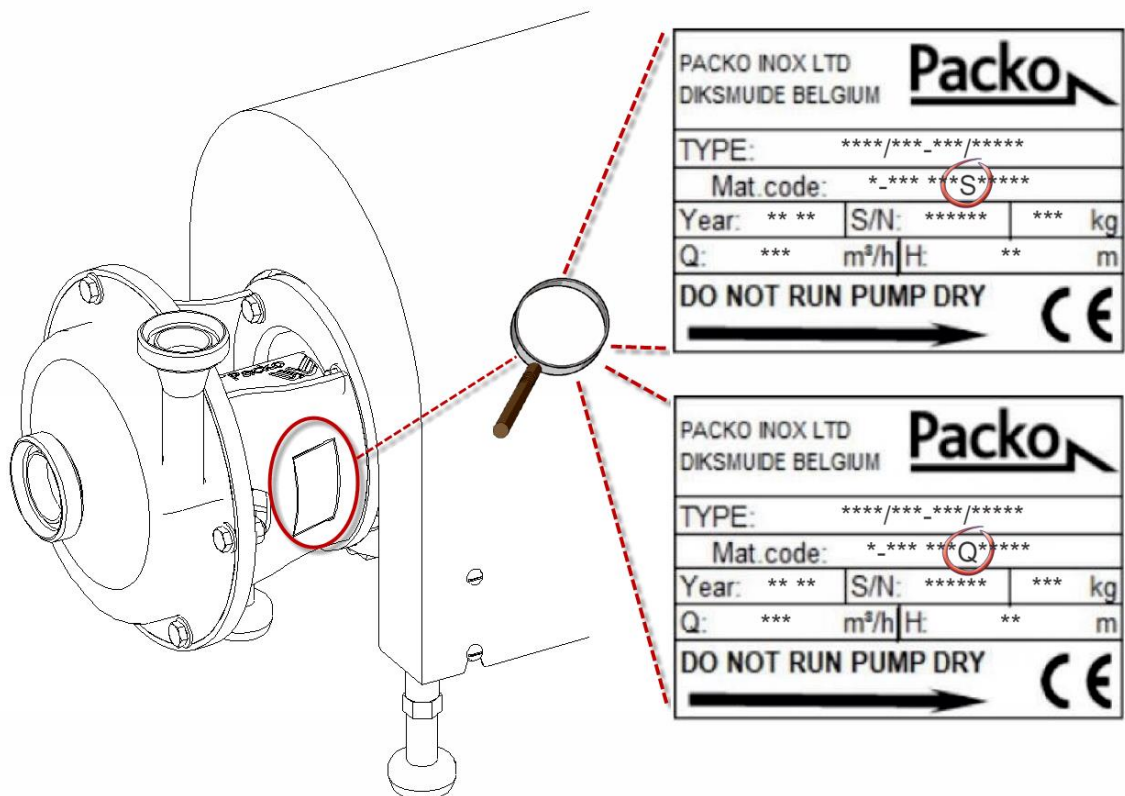
10



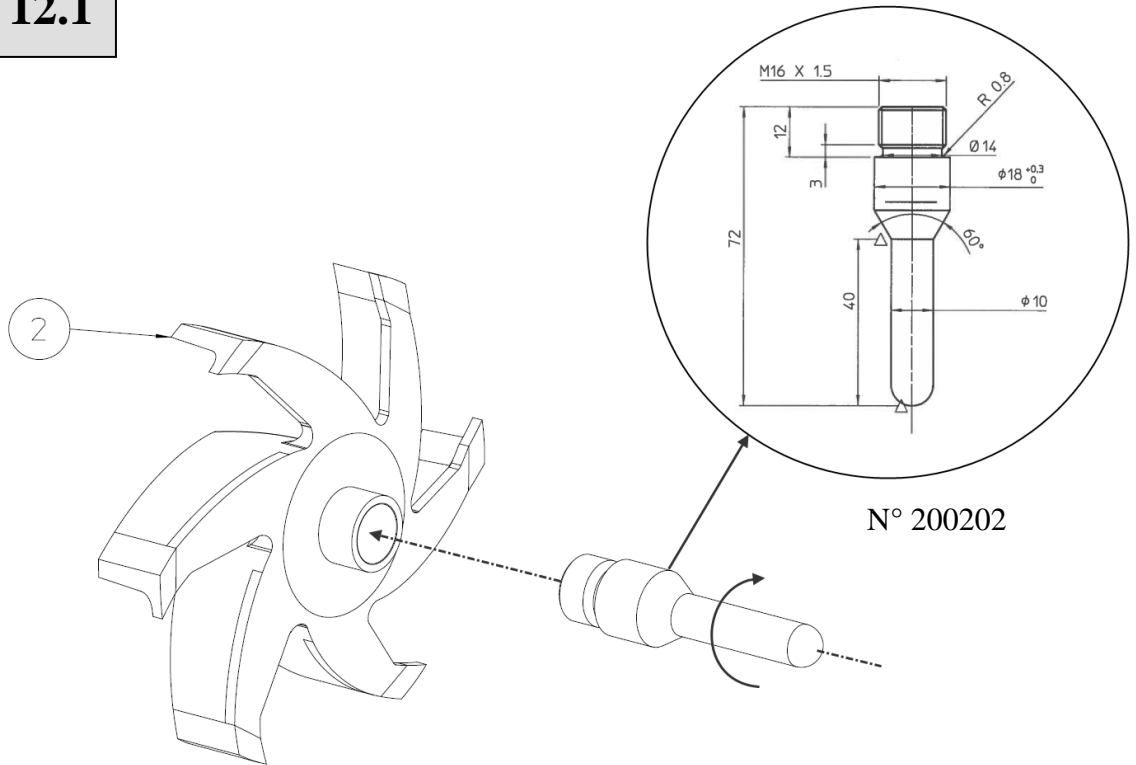
11



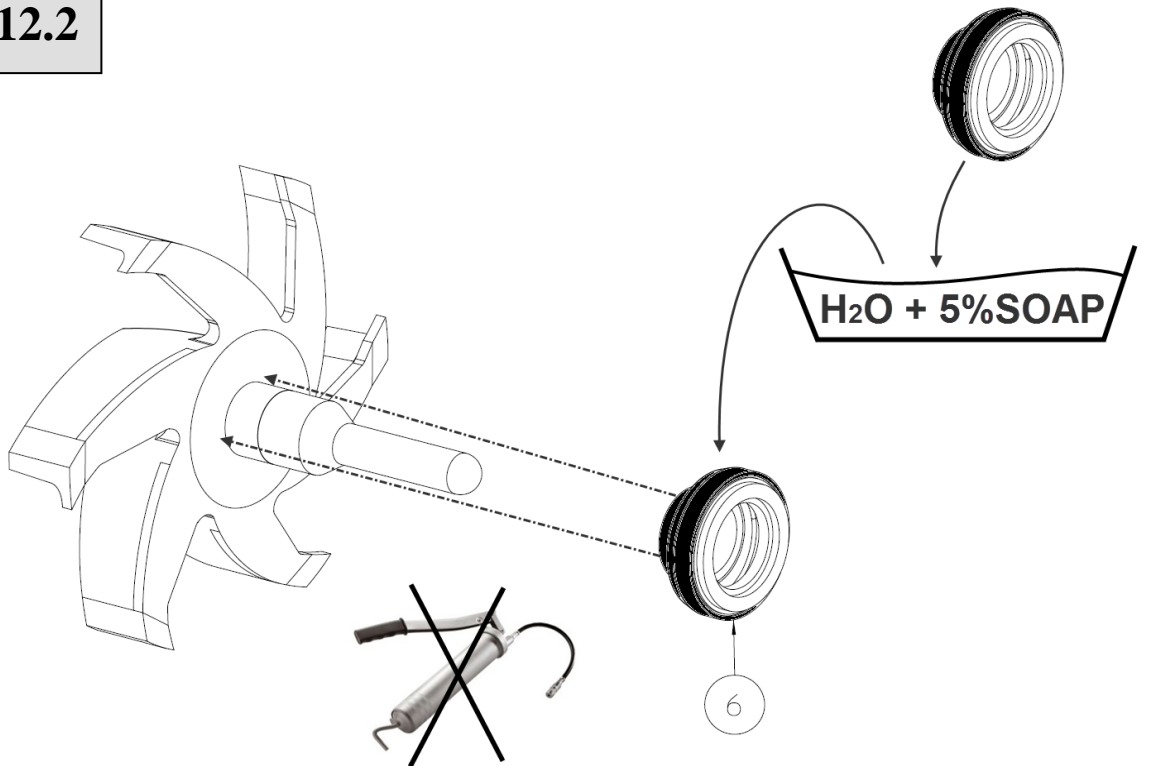
12



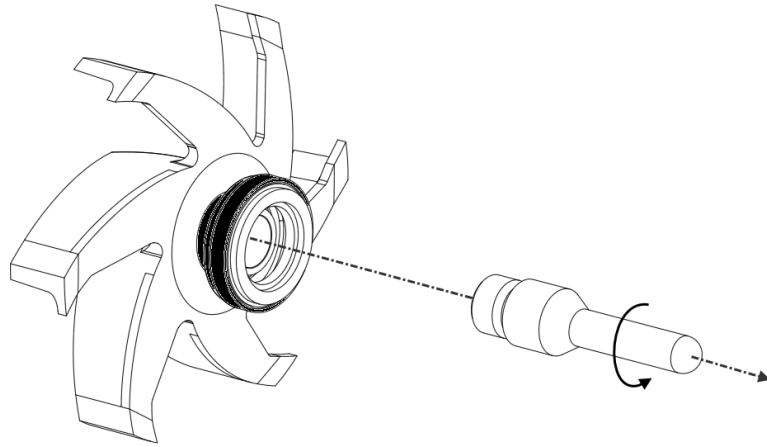
**12.1**



**12.2**

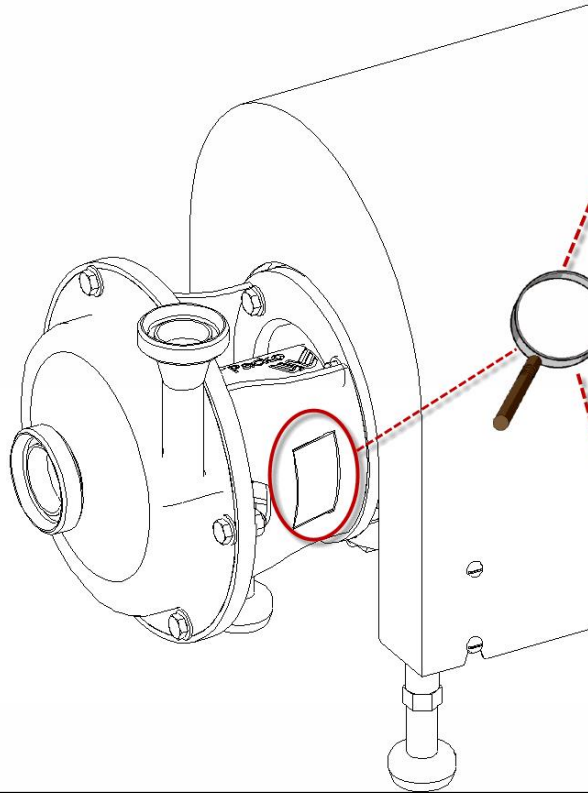


12.3



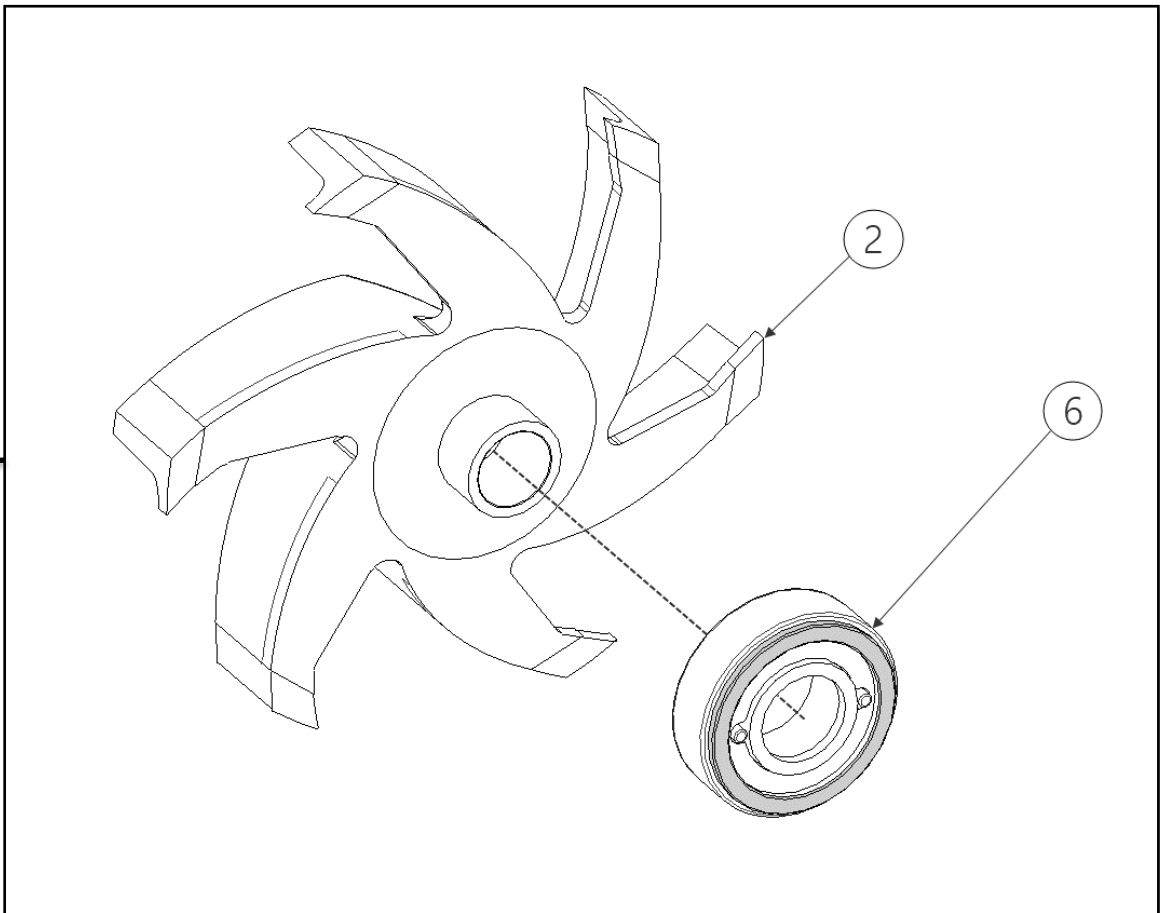


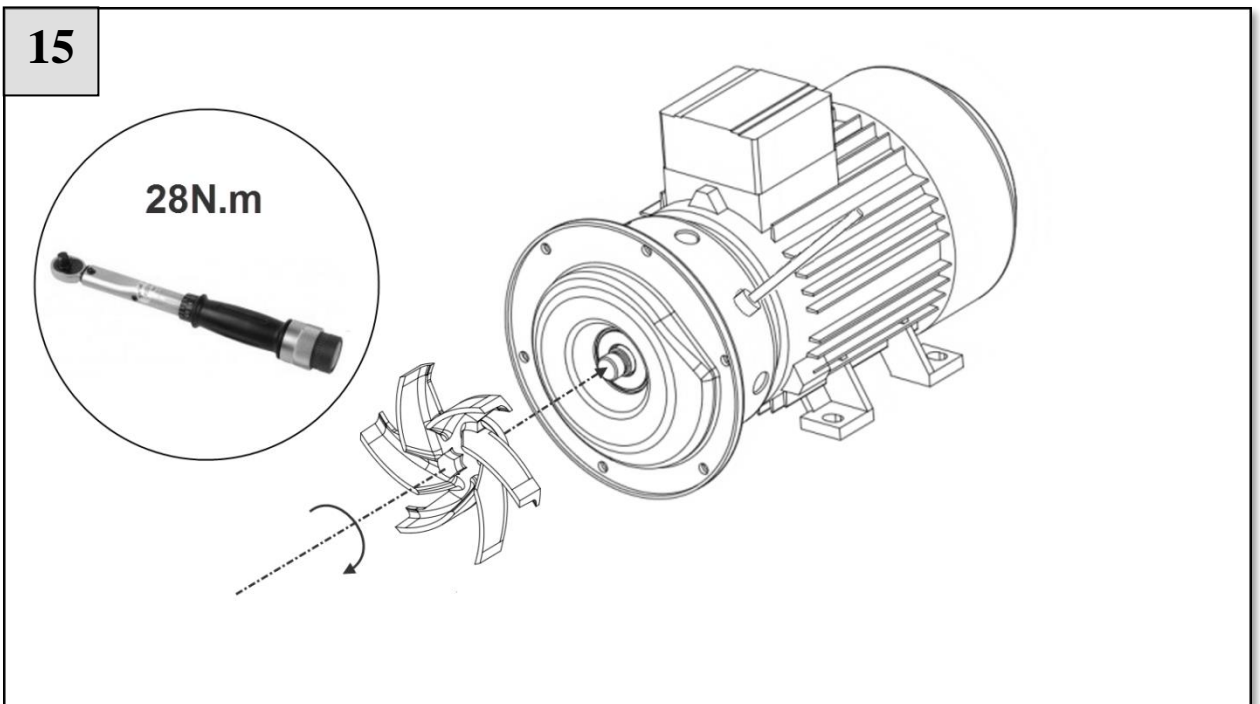
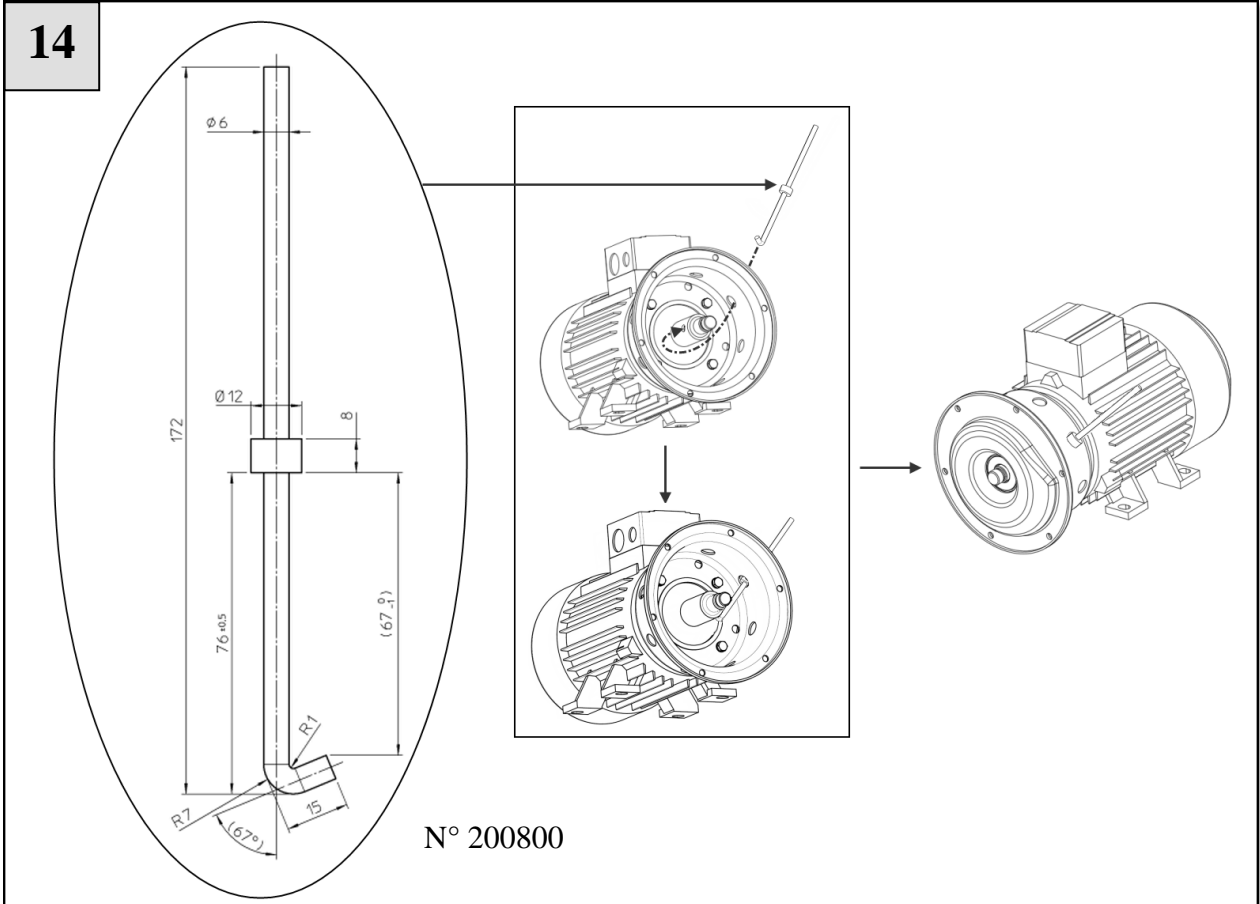
13



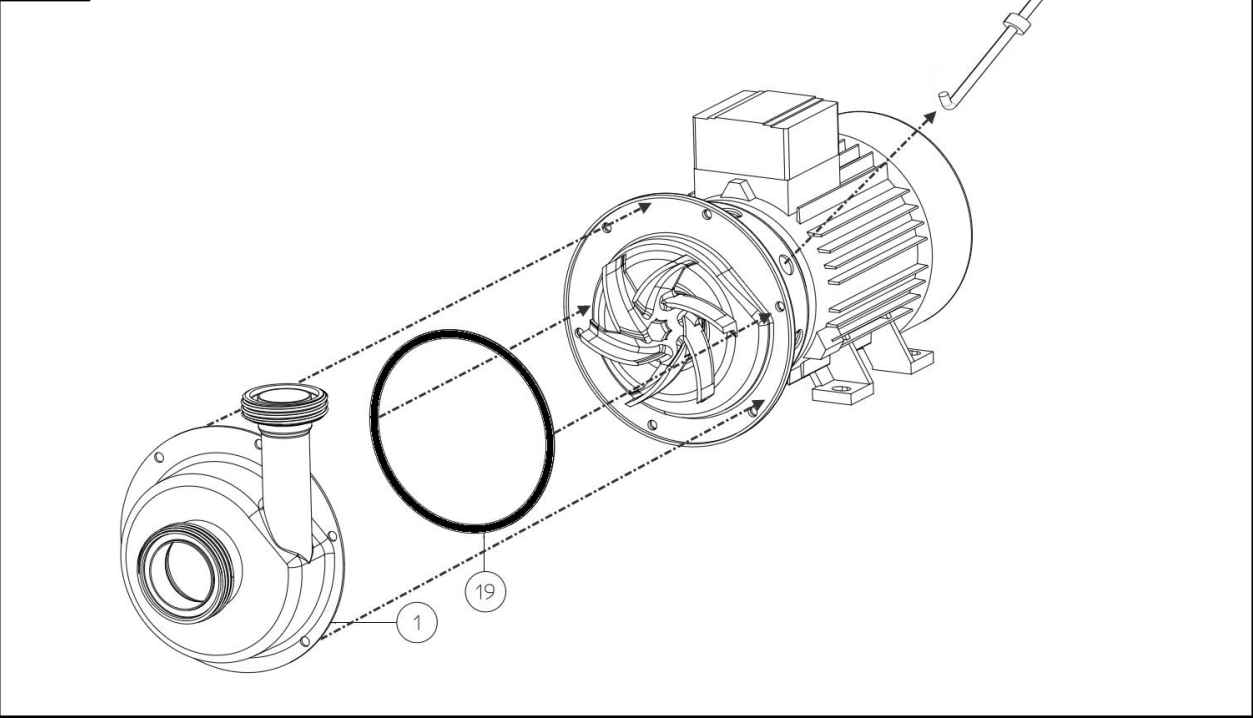
PACKO INOX LTD DIKSMUDE BELGIUM		<b>Packo</b>	
TYPE: ****/***_***/*****			
Mat. code: *_*** ***(O)*****			
Year: ***	S/N: *****	***	kg
Q: ***	m³/h	H: **	m
DO NOT RUN PUMP DRY			CE
➔			

PACKO INOX LTD DIKSMUDE BELGIUM		<b>Packo</b>	
TYPE: ****/***_***/*****			
Mat. code: *_*** ***(N)*****			
Year: ***	S/N: *****	***	kg
Q: ***	m³/h	H: **	m
DO NOT RUN PUMP DRY			CE
➔			

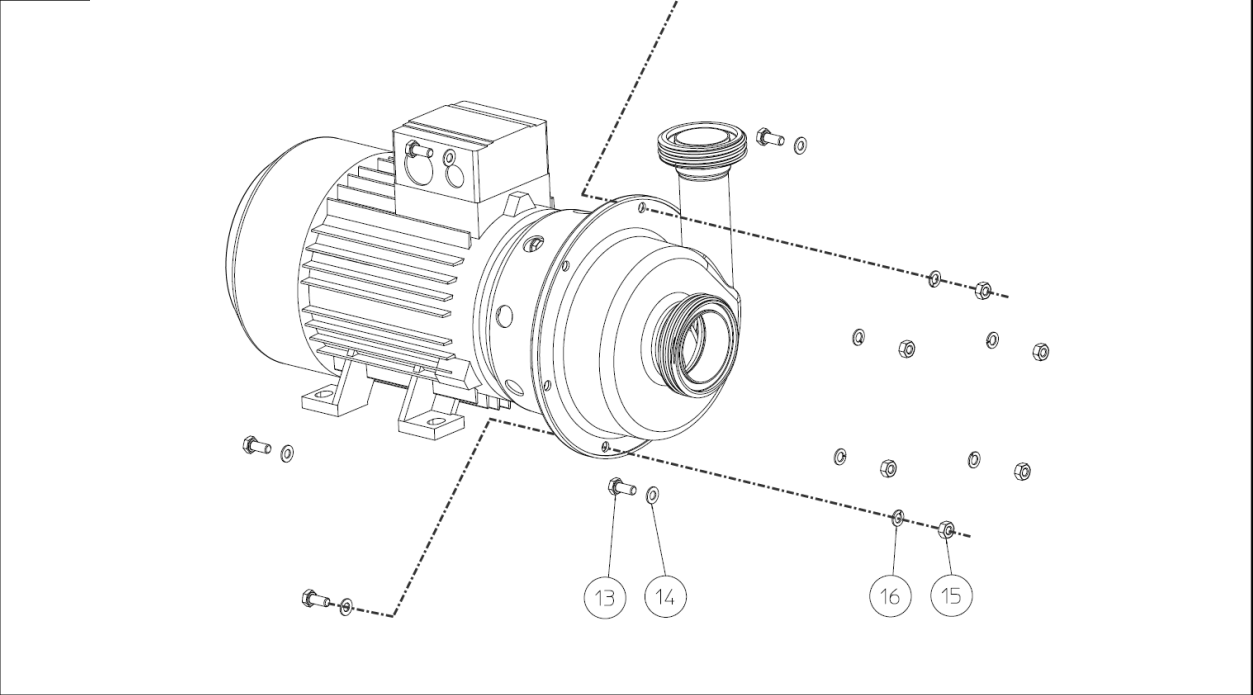




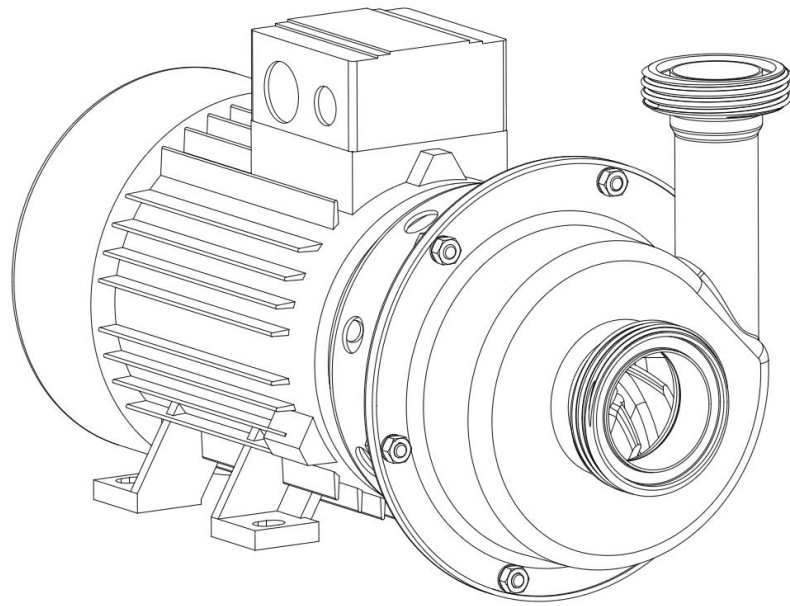
**16**



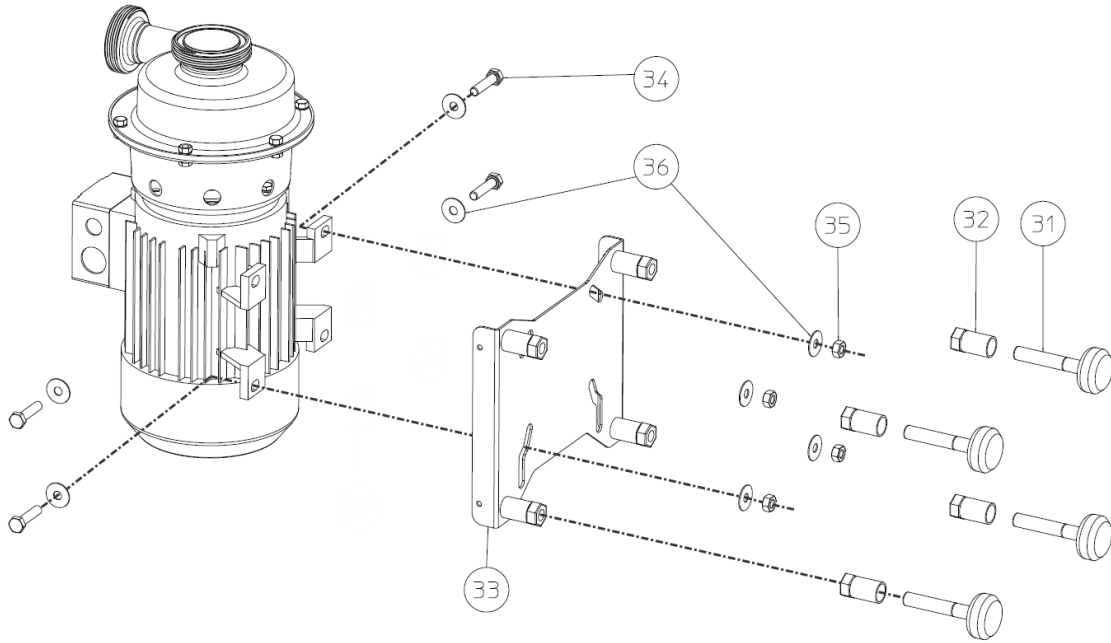
**17**



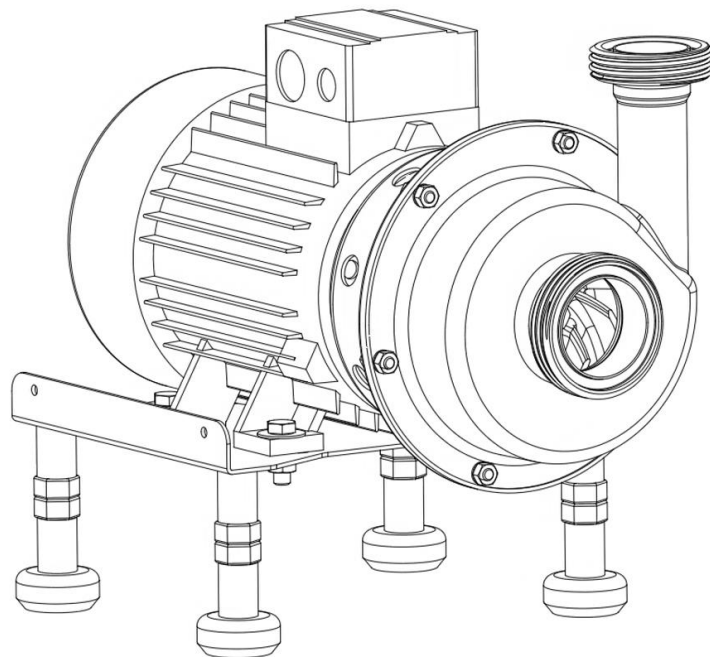
18



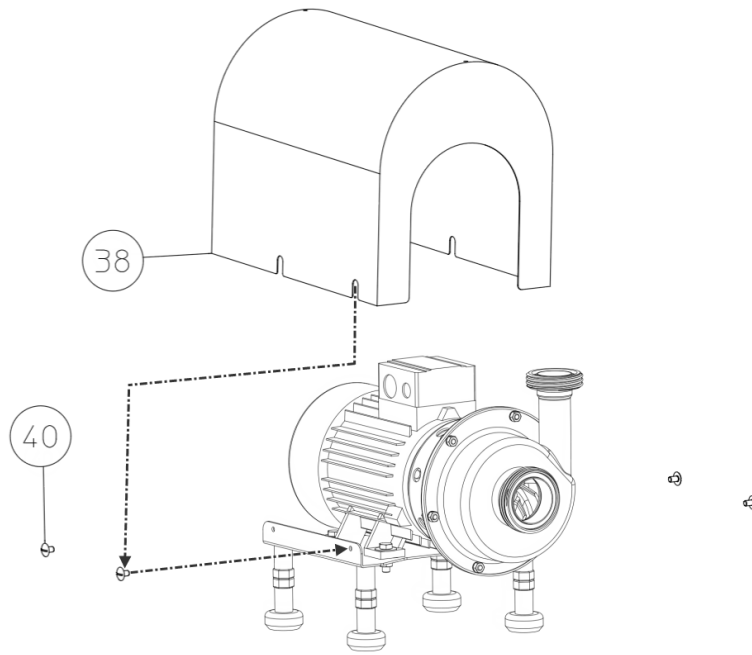
19



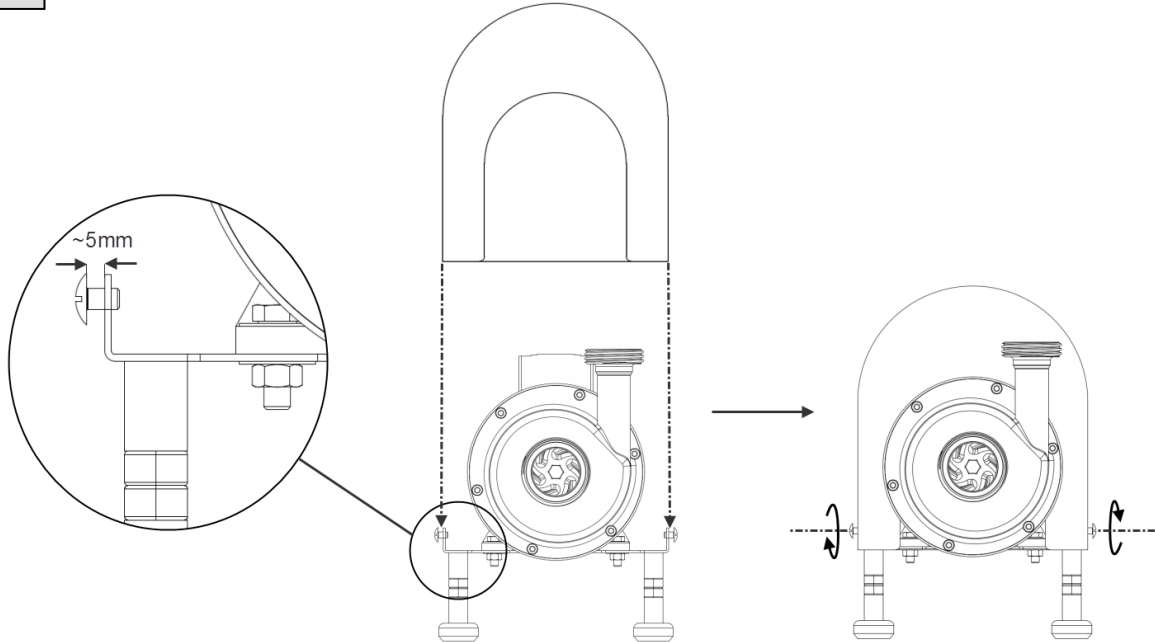
20



21



22



23

