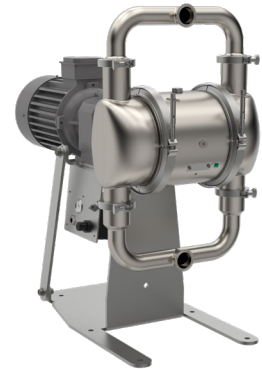


VERDERAIR

VA-E2H52 SB



The VA-E2H52 SB is a hygienic designed electrical operated double diaphragm pump. With the wide range of available materials for pump body, valve seats, valve balls and diaphragms, this pump is the ideal problem solver for numerous hygienic applications. The VA-E2H series is used where a high degree of food safety is required. The VA-E2H is a reliable, easy to operate pump.

Your benefits

- Most hygienic design for food applications
- Efficient engineered design which reduces the risk of contamination (low amount of products which come into contact with the medium)
- A high quality product with best price-performance ratio
- Can run against closed discharge valve without the need of overpressure safety equipment
- Dry self-priming

Technical Data				
Weight (kg)	Drive option	Fluid & air section		
	WG	XS-YS	135	
	AC	XS-YS	200	
	BC	XS-YS	185	
	CC	XS-YS	176	
	AX	XS-YS	253	
	BX	XS-YS	195	
	CX	XS-YS	184	
	A2	XS-YS	213	
	B2	XS-YS	198	
C2	XS-YS	189		
Max. Suction lift (mwc)		Dry	4,3	
		Wet	9,1	
Temperature limits (°C)	Internals	BUNA-N	-12	82
		FKM *	-40	135
		Neoprene	-18	82
		PTFE	4	104
		EPDM overmold diaphragms	-40	121
		Santoprene	-40	82
Max. Particle size (mm)			12,7	
Air connection			3/8" NPT(f)	
Air consumption (Nm³/h)			< 0,006	
Max. recommended viscosity (mPas)			20.000	
Certifications	All models	CE, FDA		
	Internals	diaphragms EO,TS in combination with TF valves diaphragms EO,TS in combination with TF valves	EN1935/2004	USP class VI

VERDERAIR

VA-E2H52 SB

Code VA-E2H52 No.1 No.2 No.3 No.4.No.5.No.6.No.7.No.8.No.9		
<p>No. 1 Fluid Section Material X = 316 Stainless Steel, Ra : 0,8µm Y = 316 Stainless Steel, Ra : 0,5µm</p> <p>No. 2 Air Section Material S = 316 Stainless Steel</p> <p>No. 3 Check Valve seat material SE = SS seat with EPDM o-rings SB = SS seat with Buna-N o-rings ST = SS seat with EP-TF o-rings SV = SS seat with FKM o-rings</p> <p>No. 4 Check ball valves material BN = BUNA-N NW = Neoprene weighted SP = Santoprene TF = PTFE VT = Viton</p>	<p>No. 5 Diaphragm material BN = BUNA-N EO = EPDM overmolded SP = Santoprene TS = PTFE/Santoprene 2 piece VT = Viton</p> <p>No. 6 Connections D5 = DIN 11851, DN50, male T5 = Tri-Clamp (ASME BPE), 2"</p> <p>No. 7 Drive options AC = Gearbox with 5,5 kW drive (pump speeds : 164,145 or 130 RPM) BC = Gearbox with 4,0 kW drive (pump speeds : 105 or 87 RPM) CC = Gearbox with 3,0 kW drive (pump speed : 73 RPM) Gearbox with 2,2kW drive (pump speed : 54 RPM)</p>	<p>A2 = AC + compressor 240V/50Hz B2 = BC + compressor 240V/50Hz C2 = CC + compressor 240V/50Hz AX = Gearbox with 5,5 kW drive (pump speed ± 125 RPM) BX = Gearbox with 4,0 kW drive (pump speed ± 90 RPM) CX = Gearbox with 2,2 kW drive (pump speed ± 54 RPM) **WG = No gearbox, no drive</p> <p>No. 8 Pump style SB = Ball valve execution</p> <p>No. 9 Certifications 21 = EN 10204 type 2.1 31 = EN 10204 type 3.1</p>

NOTE not all combinations are available

* II 2 G Ex d h IIB T3 Gb ** ** II 2 G Ex h IIB T3 Gb

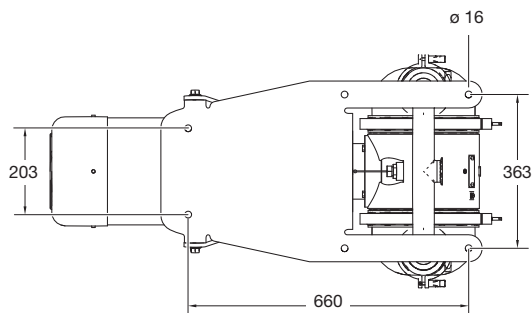
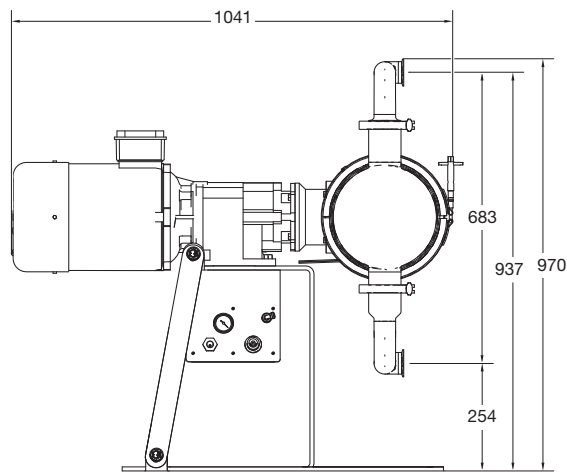
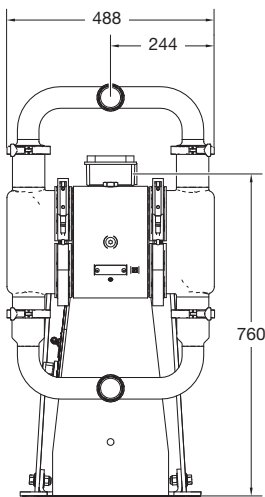
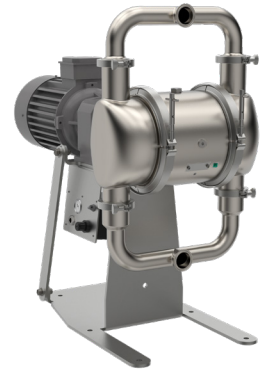
EXAMPLE PUMP TYPE

VA-E2H52 XS SE SP SP D5 AC SB 21

VERDERAIR

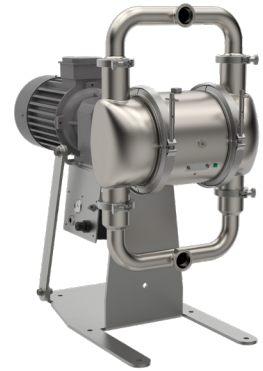
VA-E2H52 SB

Dimensions (mm) typical only for pumps with 5,5 kW drive

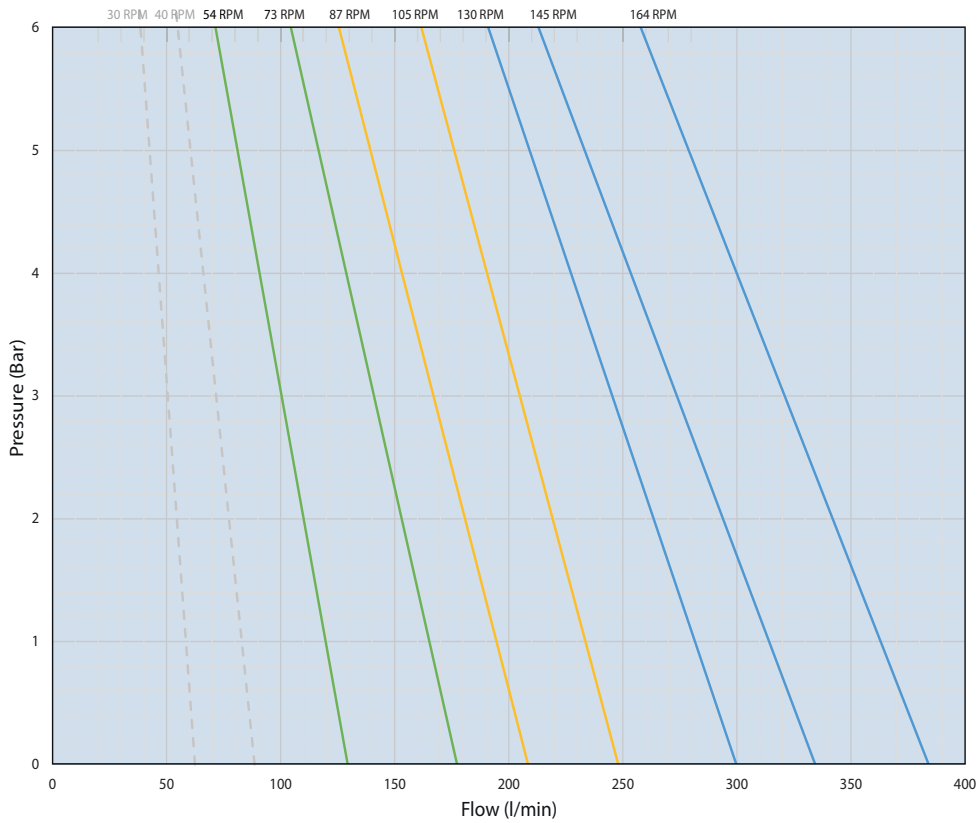


VERDERAIR

VA-E2H52 SB

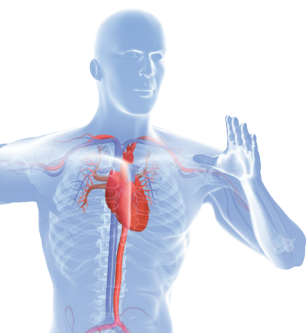


Flow rate



- 164 RPM (5,5 kW)
- 145 RPM (5,5 kW)
- 130 RPM (5,5 kW)
- 105 RPM (4 kW)
- 87 RPM (4 kW)
- 73 RPM (3 kW)
- 54 RPM (2,2 kW)
- - - 40 RPM
- - - 30 RPM

Datasheet_VA-E2H52_SB_EU



Find your local supplier at www.verderliquids.com

For construction, installation and floor mounting drawings
please contact your local authorised Verderair® distributor.